

# Germany's North Rhine-Westphalia

Center of Excellence of Production Technologies and the  
Manufacturing Industry



EUROPE'S |||| HEARTBEAT

# Business location NRW

EUROPE'S  HEARTBEAT

Area

34,112qkm

Population

18 million

Capital

Düsseldorf

GDP

871,9 billion €

EU's GDP

4.8%

Exports

223,2 billion €

Imports

280,9 billion €

● Düsseldorf  
● Cologne

1.000 km

500 km

\*Data of 2024

# North Rhine-Westphalia at a glimpse

## Germany's economic powerhouse

More than 700,000 small and medium-sized companies are calling North Rhine-Westphalia home and 17 of the 50 top-selling companies in Germany are based in NRW

## Europe's largest sales and sourcing market

14.8 % of German exports are "Made in NRW"

## Germany's No.1 Investment Location

20.7 % (roughly 24,000) of international companies in Germany are located in NRW, creating 1.3 million jobs



# North Rhine-Westphalia at a glimpse



## Research & Development

Densest R&D network in Europe with around **70** universities, technical colleges and research institutes and **14** clusters of excellence

## Qualified professionals

Around 750,000 students yearly of which approx. 300,000 students are from STEM fields

## The Gateway of Europe

2 International airports, the world's largest inland port in Duisburg

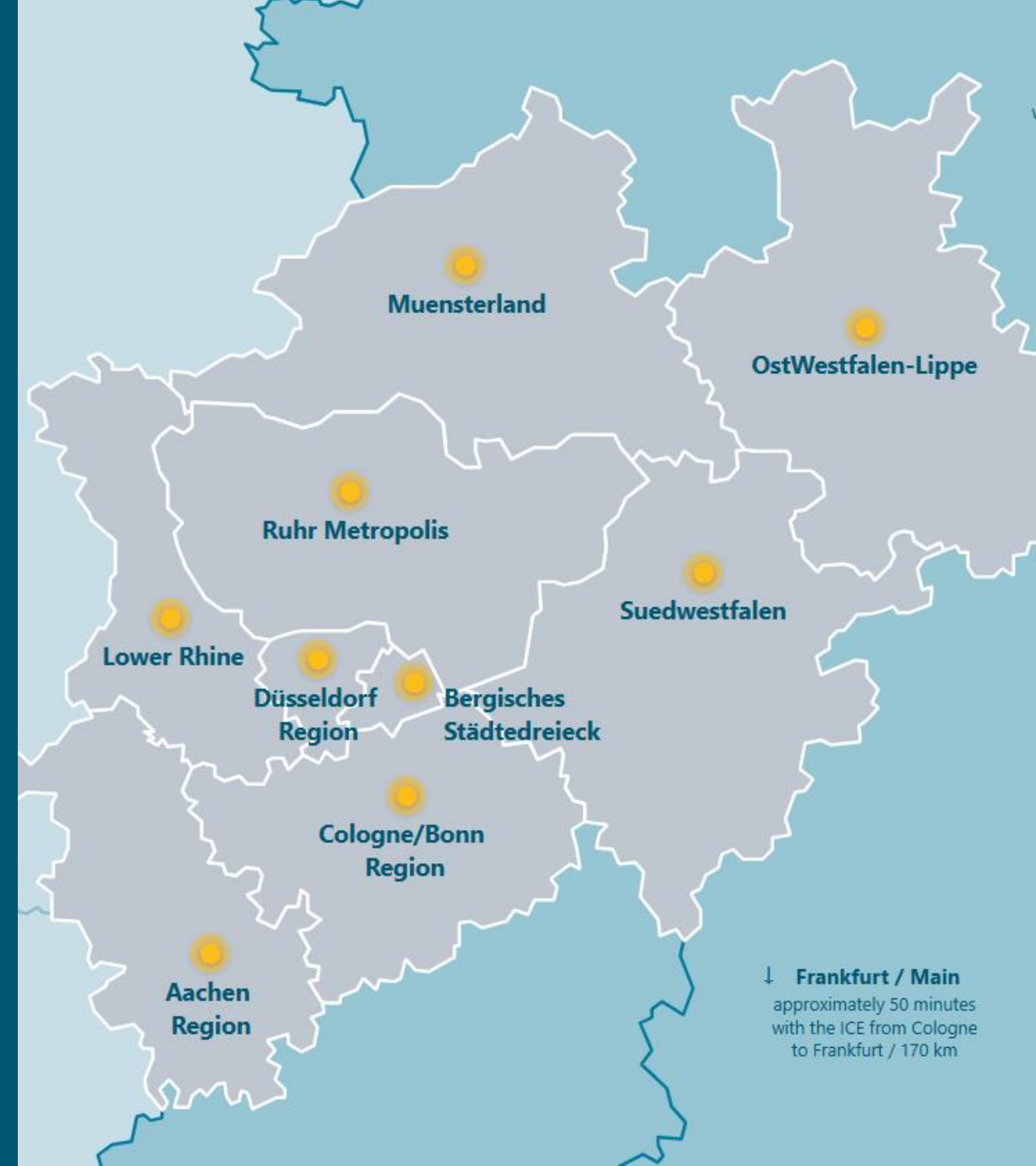
## Trade fairs

One of the largest trade fair centers in the world With 4 internationally renowned trade fair locations



# NRW – Industrial heartland of Germany

- In 2024, the industrial enterprises based in NRW generated sales of **385 billion euros**.
- **1.2 million people** in NRW are employed in industry
- Biggest industrial employer: mechanical engineering with around **200,000 employees** in **1,600 companies**
- The **Ruhr Metropolis** as its core, NRW is the strongest industrial region in Europe.
- The **Bergisches Städtedreieck** (city triangle) – which includes the cities of Solingen, Remscheid and Wuppertal - is characterized by areas that include automotive, electrical engineering, metal-working and resource efficiency



# The Smart Industry in NRW

- In NRW, companies from all kinds of industries develop **smart solutions to optimize production and products**.
- In a variety of networks, companies work together with regional universities, research institutes and clusters to **take manufacturing to the next level**.
- Traditionally grown and innovative industrial landscape meets technological know-how
- Around one **1/3** of all German **ICT sales**, 103 billion euros, are generated in NRW
- Around **92,000 students** in the fields of information technology and electrical engineering offer great specialist potential
- **9 of the top 50 robotic producers** of Germany are located in NRW.

# The economic importance of Smart Machinery

Sector sales in NRW  
**7,8 billion €**

Machine building  
companies in NRW  
**750**

Most important export  
markets  
**Asia, Europe and  
North America**

Sectoral sales in  
Germany  
**26,8 billion €**

Workforce in  
NRW  
**35,100**

# Excellent R&D-landscape for Smart Manufacturing

## Leading research Institutes:



Research focus in NRW: Smart Factory (intelligent sensor systems, big data platforms), human-machine systems/robotics

## Universities and technical colleges:



Study programs in NRW (selection): Mechanical Engineering, Production Engineering, Innovative Production Systems, Automation and Robotics



# Clusters and networks for Smart Manufacturing

## Mittelstand-Digital Zentrum Ruhr-OWL

Location: Dortmund

[www.mittelstand-digital-ruhr-owl.de](http://www.mittelstand-digital-ruhr-owl.de)

## Zentrum für Produktionstechnologie

Dortmund

Location: Dortmund

[www.zfp-do.de](http://www.zfp-do.de)

## ProduktionNRW Cluster

Maschinenbau/Produktionstechnik

Location: Düsseldorf

[www.produktionnrw.org](http://www.produktionnrw.org)

## WZL RWTH Aachen

Location: Aachen

[www.wzl.rwth-aachen.de](http://www.wzl.rwth-aachen.de)

## Internet of Production

Location: Aachen

[www.iop.rwth-aachen.de](http://www.iop.rwth-aachen.de)

## FIR RWTH Aachen

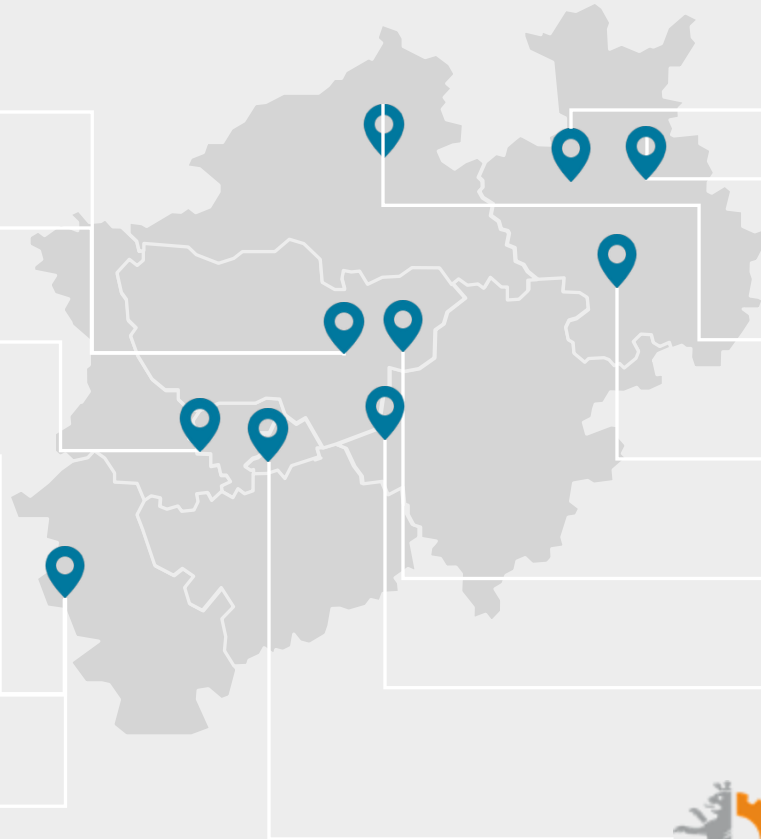
Location: Aachen

[www.fir.rwth-aachen.de](http://www.fir.rwth-aachen.de)

## Cluster WEST - Fraunhofer-Institut

Location: Aachen

[www.rokhy.de](http://www.rokhy.de)



## owl maschinenbau

Location: Bielefeld

[www.owl-maschinenbau.de](http://www.owl-maschinenbau.de)

## SmartFactoryOWL

Location: Lemgo

[www.smartfactory-owl.de](http://www.smartfactory-owl.de)

## ARC – Automatisierungs- und Robotik-Center

Location: Greven

[www.muensterland.com](http://www.muensterland.com)

## it's OWL

Location: Paderborn

[www.its-owl.de](http://www.its-owl.de)

## Netzwerk Industrie RuhrOst e. V. (NIRO)

Location: Unna

[www.ni-ro.de](http://www.ni-ro.de)

## Netzwerk Maschinenbau Südwestfalen (NEMAS)

Location: Altena

[www.nemas-sw.de](http://www.nemas-sw.de)

## Maschinenbaunetzwerk Bergisch Land

Location: Solingen

[www.maschinenbaunetzwerk.de](http://www.maschinenbaunetzwerk.de)

# Mechanical Engineering Network Bergisch Land

Since 2013, 50 small and large companies have joined forces to form the *Mechanical Engineering Network Bergisch Land* – ranging from small businesses to large corporations.

## Initiators:

- University of Wuppertal
- MKW GmbH
- Bergisch Structural and Economic Development Agency

## Industries:

(Special) machine construction,  
metalworking, toolmaking



**BECKHOFF** New Automation Technology



# Mechanical Engineering Network Bergisch Land

**Let's do this together!**

## **Networking Insights**

Regular network events allow companies to visit each other and share their expertise.

## **Shared Information**

Joint excursions, thematic roundtables, and events promote knowledge exchange

## **Talent Link**

A lecture series at the University of Wuppertal brings together entrepreneurs and potential skilled workers early on.

## **Joint Marketing**

The network presents itself online, in the press and at trade fairs.

## **Innovation Link**

Cooperation with the University of Wuppertal ensures access to current technologies.

# NRW: Business Hub No.1 for Japanese Companies in Europe





# NRW and Japan: A long standing and important economic relationship

Japanese Companies in  
NRW

~ 650

Employed in Japanese  
Companies

~ 81,000

Annual Turnover

~ 38 billion €

Pure subsidiaries

67%

Japanese Companies with European HQ in NRW

More than 50%

Key industries

automotive suppliers, mechanical engineering,  
telecommunications, electronics, chemicals and pharmaceuticals

Japanese nationals living in  
NRW

>14,000

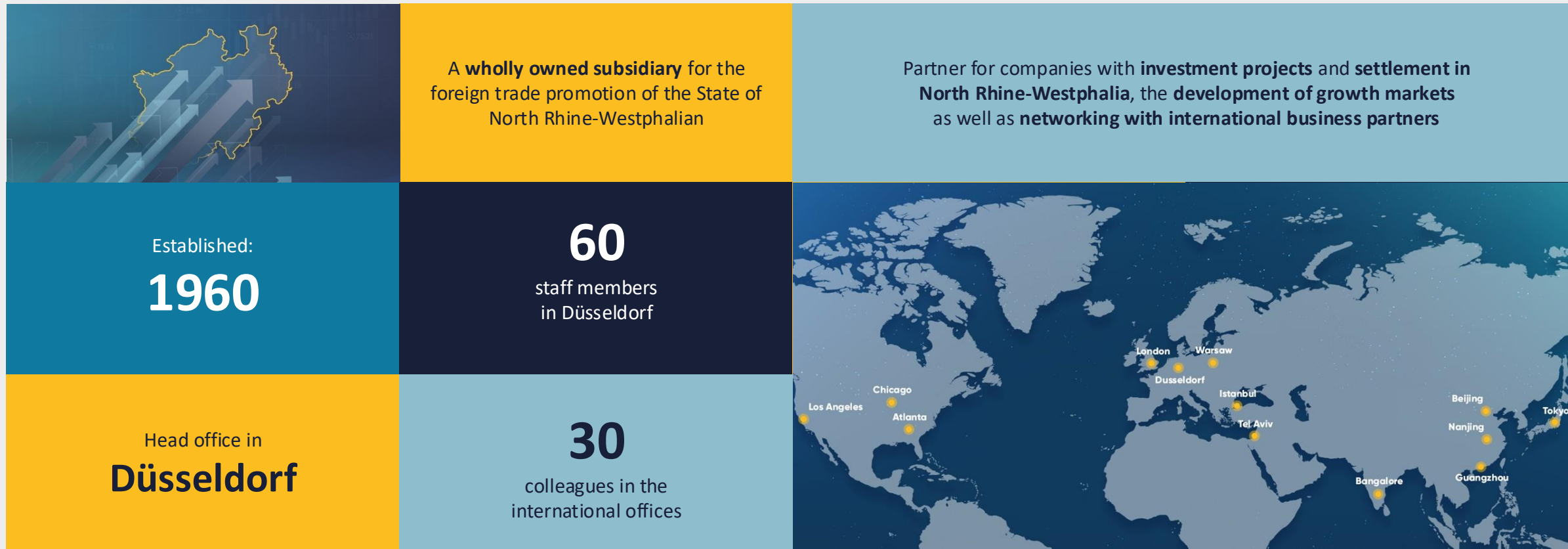
Outstanding Japanese infrastructure for  
busniesses

Japanese banks, tax consultants, lawyers, HR  
consultant,  
Japanese chamber of commerce etc.

Outstanding Japanese infrastructure for families

Japanese International school,  
supermarkets, medical doctors,  
restaurants etc.

# NRW.Global Business – who we are



If Europe, then Germany.  
If Germany, then NRW.

North Rhine-Westphalia  
(NRW), is looking forward to  
welcoming you!

Thank you for your  
attention!

