

**Success through  
Cooperation**





谷 伸一

IoT、APAC

グローバル・プロジェクト・マネージャ

ボーダフォン・グローバル・エンタープライズ

**Shinichi Tani**

**Global Project Manager, IoT APAC**

**Group Technology Enterprise Solutions**

**Vodafone Global Enterprise Limited**

**Mobile: +81 80 4006 6167**

**Email: [shinichi.tani@vodafone.com](mailto:shinichi.tani@vodafone.com)**

# Our Partnership - Digital City Düsseldorf



# Digitale Stadt Düsseldorf

## Business Networking Way of Life





# Digitale Stadt Düsseldorf: The Network

## Communications - Networking – Industrial Diversity

The Digital City Dusseldorf connects the industries of the future information and communications technology (ICT) with traditional sectors. More than **280** companies from Dusseldorf and surrounding areas have come together in recent years within the network.

# Digitale Stadt Düsseldorf: The Network



Stephan Schneider  
CEO

Senior Manager, Vodafone Germany





**SMART City Duesseldorf**

**Powered by Vodafone**



# Examples: implemented topics within Digitale Stadt Düsseldorf

- Rheinbahn App (Tram)
- Politessen-App (local Police Officers)
- Street Observer (Asphalt-Damage Registration)
- Food Administration (online Register)
- Supplier Airport Düsseldorf (u.a. WLAN)
- WDZ\*: Telemedical care for diabetes patients worldwide



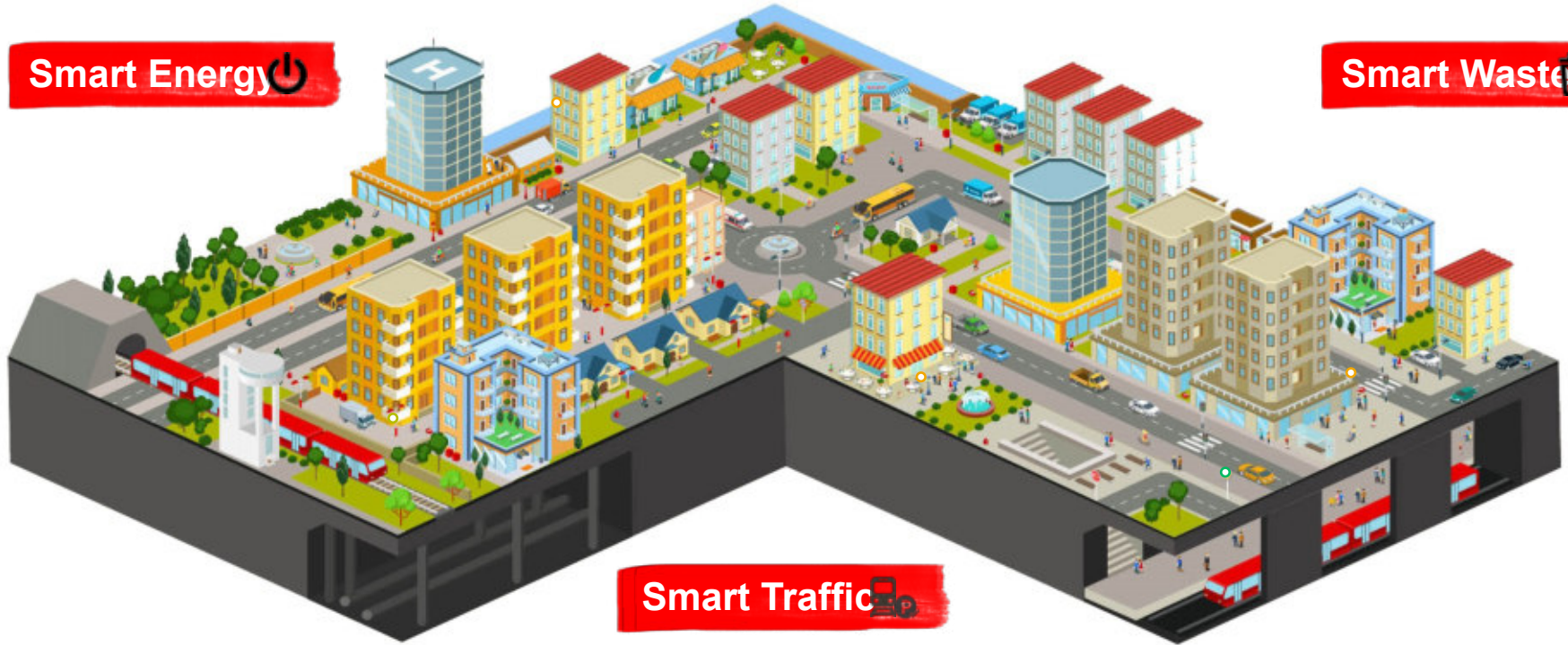
# Vodafone Smart City Portfolio

Smart Lighting 

Smart Safety 

Smart Energy 

Smart Waste 



Smart Traffic 

# Smart City @Cebit: The „Merkel & Abe - Case“



Three topics presented:

- Smart City Lights
- Smart Waste
- Connected Mobility

Experience it yourself  
at Vodafone Campus  
in Düsseldorf!





# Vodafone Innovation Park



# Vodafone Innovation Park

<https://www.vodafone.de/innovationpark/en/discover-vodafone-innovation-park.html>



Click [HERE](#) to see the video

A Tailor-Made Ecosystem for Your Testing Purposes

Realistic end-to-end environment with three of the most important network equipment vendors on site

Variety of dedicated test scenarios possible, e.g. battery consumption measurements under different coverage scenarios

Professional Certification Services against standardised network features

Connectivity to external servers and possibility to host customer servers and applications

Open for all interested parties

# Vodafone Innovation Park



**NB-IoT Open Lab  
@Vodafone Innovation  
Park**



# NB-IoT Multivendor Open Lab



The NB-IoT Open Lab in Düsseldorf, Germany is the world's first multivendor NB-IoT Open Lab and is operated in partnership with Huawei, Ericsson and Nokia.

The Open Lab provides a simulated real time environment for application developers and device, module and chip manufacturers to test their products. This accelerates their time to market for NB-IoT devices and services. It also allows device manufacturers to verify that their products meet the exceptional sensitivity and battery life performance requirements for NB-IoT devices.



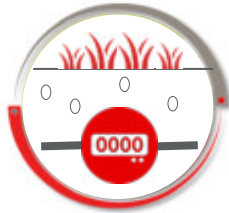
# What is LPWA?

## LPWA

Low Power Wide Area wireless network technology is specifically for connecting devices with low bandwidth requirements, using low power whilst providing increased penetration. Many millions of devices will be connected via LPWA



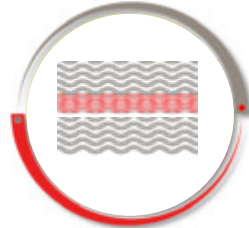
**10+ Years  
Battery Life**



**Deep  
Penetration**



**Mass  
Deployment**



**Low  
Bandwidth**



**Device  
Cost**

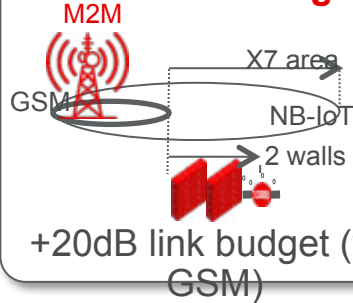
# What does NB-IoT deliver?

**Optimised power consumption**



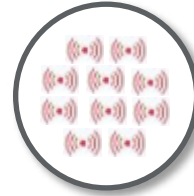
>10 year battery life

**High propagation: better coverage**



+20dB link budget (vs. GSM)

**High end-point density**



>100,000 connections per cell

**Low complexity devices**



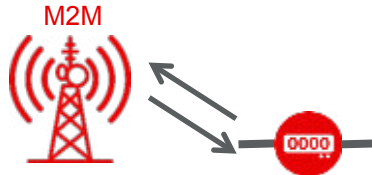
Targeting modules costing just a few £

**Limited throughput**



<200kbps

**Bi-directional communication**



Uplink and downlink capability

**LTE level security**



Encryption, SIM based authentication

**Global standard in licensed spectrum**



Standardised R13 (June 16)

# How does it compare to the competition?

	Unlicensed services (e.g. Sigfox, LoRa)	Licensed service (e.g. NB-IoT)
Leverages existing network	Red	Green
Extended battery life	Green	Green
Deep indoor coverage	Green	Green
SIM security for the IoT	Red	Green
Experienced network support	Red	Green
Standards based (non-proprietary)	Yellow	Green
Bandwidth available	Yellow	Green
2-way communication	Green	Green
Low device cost	Green	Green



# NB-IoT can transform almost every vertical



# What applications are suited to LPWA?



## Gas metering

Large homogenous market measured in millions  
**Battery life and propagation is critical**  
Large number of potential meter manufacturers



## Environmental Monitoring

Latent market waiting for a low power solution  
**Battery life and network coverage is critical**  
Fragmented channel to market in low volumes



## Water metering

Large homogenous market measured in millions  
**Battery life and propagation is critical**  
Large number of potential meter manufacturers



## Smoke and fire alarms

Massive market measured in hundreds of millions  
**Battery life and ability to test device is critical**  
High volume B2C play



## Liquid and pressurised fuel

Large homogenous market measured in millions  
Asset is currently un-monitored & losses are high  
**Battery life is critical**



## Parking monitoring

Market measured in hundreds of thousands  
**Battery life and low install cost are critical**  
Low data throughput



## Smart Bins

Growing market with good business case  
**Battery life and network coverage is critical!**  
Complements our high end connected bins



## Alarms and event detectors

Market measured in hundreds of thousands  
**Battery life is ultra critical**  
Very low data throughput on check and trigger



# 1<sup>st</sup> February 2017 | Opening of NB-IoT Open Lab in Düsseldorf

VODAFONE DEUTSCHLAND

## Auf der digitalen Überholspur

Datum: 02.02.2017 12:08 Uhr

Hannes Ametsreiter will Vodafone zum „Motor für das digitale Deutschland“ machen. Schnelle Internetanschlüsse über Kabel treiben das Geschäft des Telekom-Rivalen an.

Handelsblatt



### Schmalband per LTE: Vodafone lässt die Zukunft testen

*Saubere Bahnhöfe per LTE - das könnte möglich werden. Hintergrund ist der unsexy klingende Begriff Narrowband-IoT, ein Standard, der den Alltag verändern könnte.*

teltarif.de

ENTWICKLUNGSZENTRUM

## Vodafone startet Testnetz für Narrowband-IoT

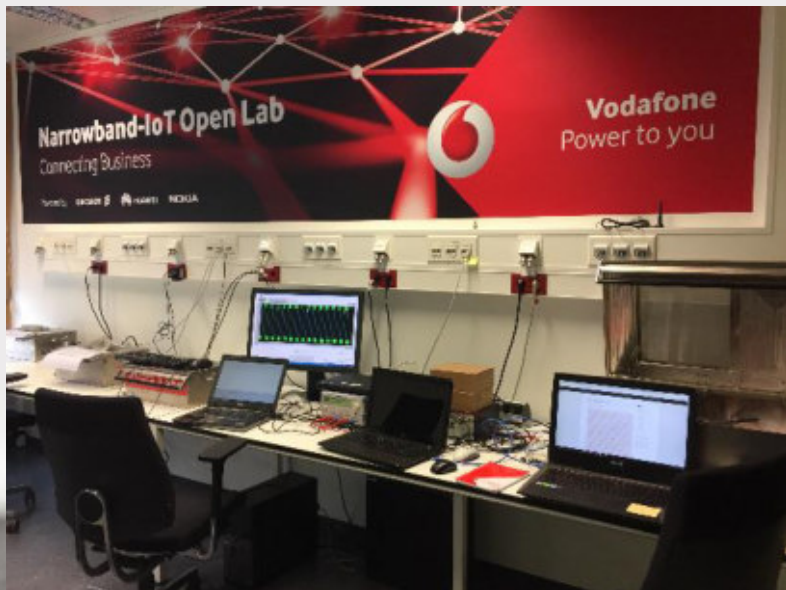
Ein erstes Testnetz für Narrowband-IoT von Vodafone Deutschland ist in Betrieb. Es basiert auf vorhandenen LTE-800-Frequenzen und hat auch etwas mit Müll zu tun.

golem.de



# Narrowband-IoT Lab | Environment

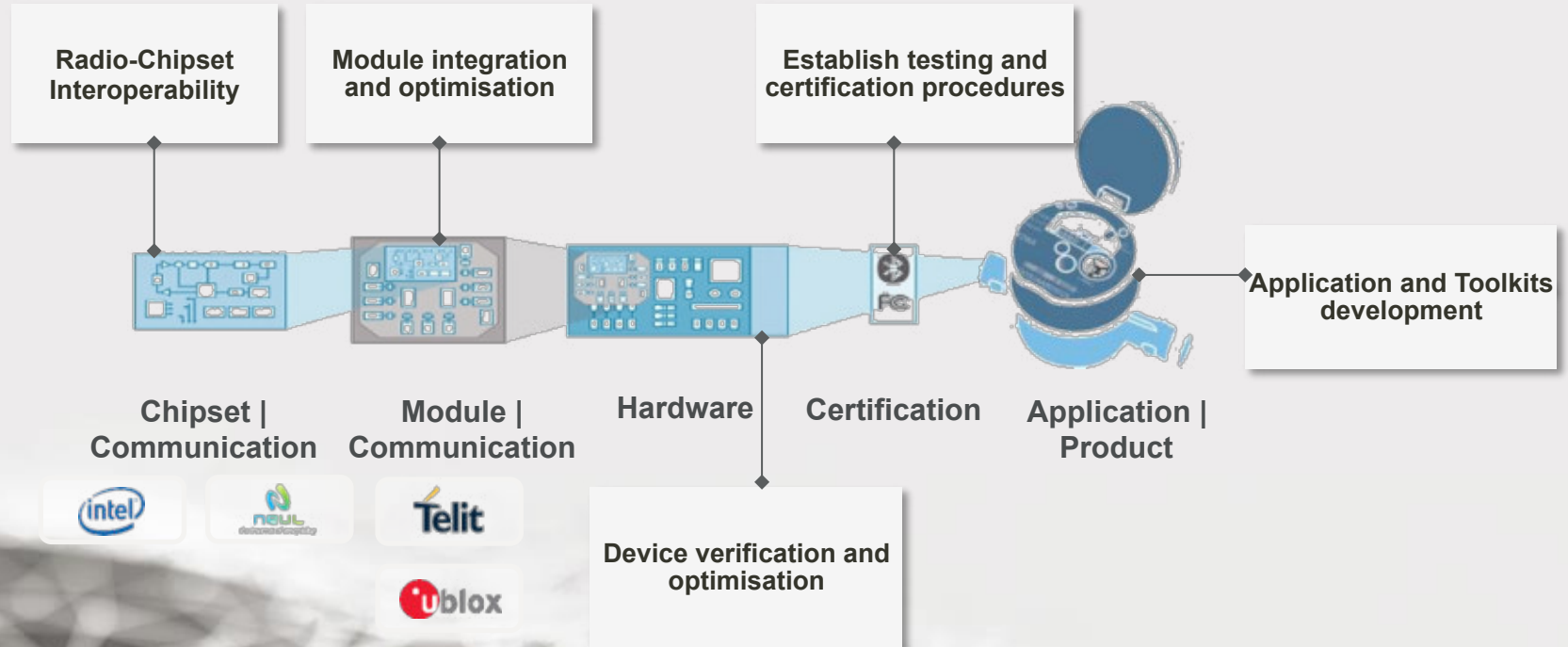
## Working Places



## Infrastructure



# NB-IoT Open Lab | Test Possibilities for your products





# NB-IoT Open Lab | At a glance

Realistic end-to-end Environment with three network vendors



Optimised for NB-IoT Feature verification



3GPP standardised Network Infrastructure



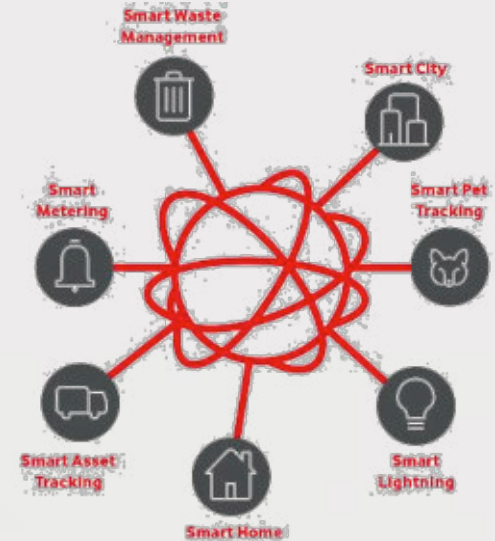
Connectivity to customer NB-IoT Application Server



Support of Vodafone IoT-experts and vendor experts, who are on site



Trusted solution



# Vodafone builds greatest and latest Communication Technologies at the highway A9



- Live network enhancements (LTE800, LTE1800, LTE2600)
- Building dedicated test networks, using LTE 2600 TDD spectrum
- Enabling LTE-broadcast, Mobile Edge Computing, Direct mode communication, Crowd RAN, Candidate 5G enabler, etc.
- Access to technologies from multiple vendors



# VODAFONE GLOBAL ENTERPRISE





A  
Global  
Partner

Active in  
>150  
countries

Wire  
Wireless  
Cloud

1400  
Multi national  
businesses serviced

1 contract 1 global P&L



# Spring – one of Vodafone's largest corporate investment programs

## Investing

---

£19 billion over two years

## Growing

---

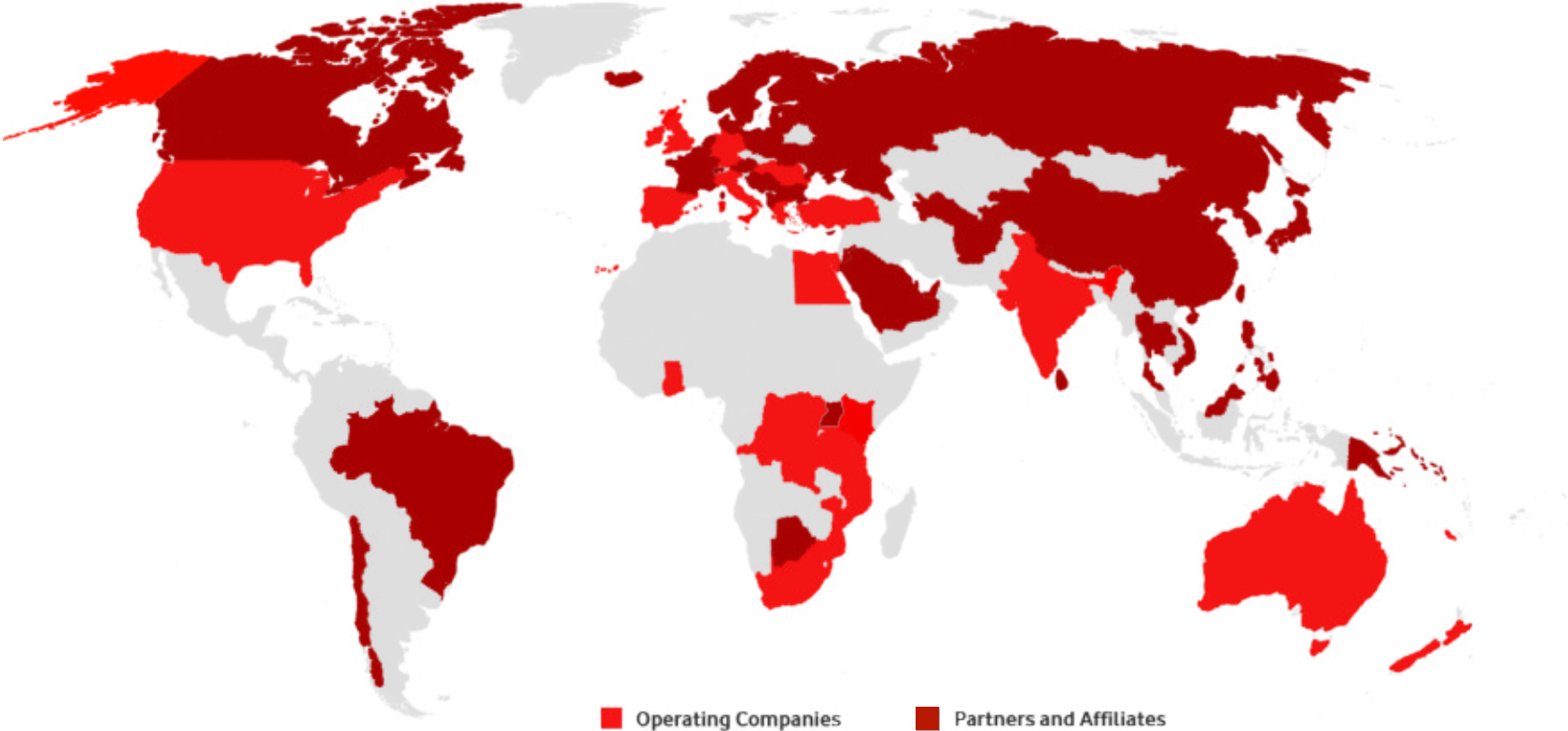
300+ POPs in 92 countries

## Extending

---

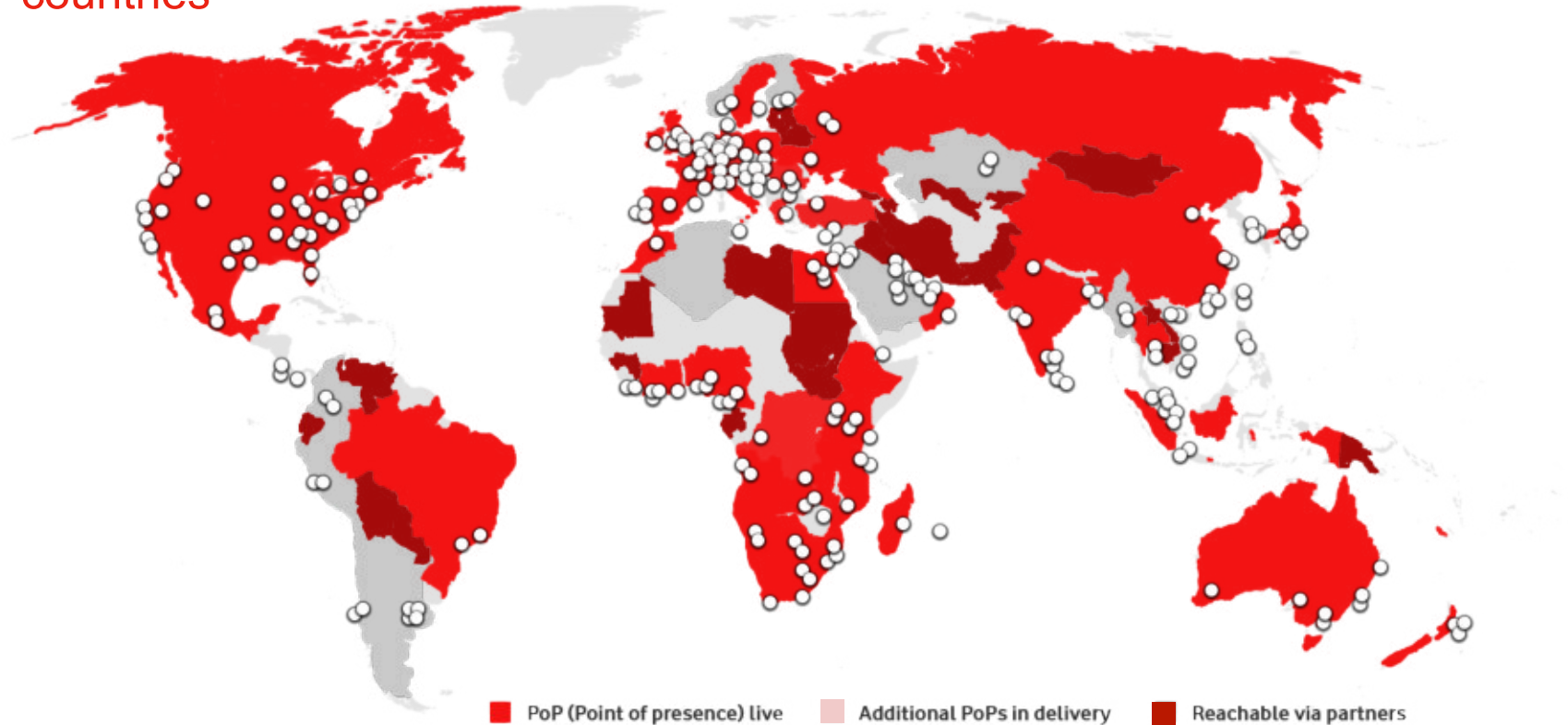
Americas, Asia, Middle East & Africa

# Extensive global reach with 26 Operating Companies and a further 55 Partners and Affiliates



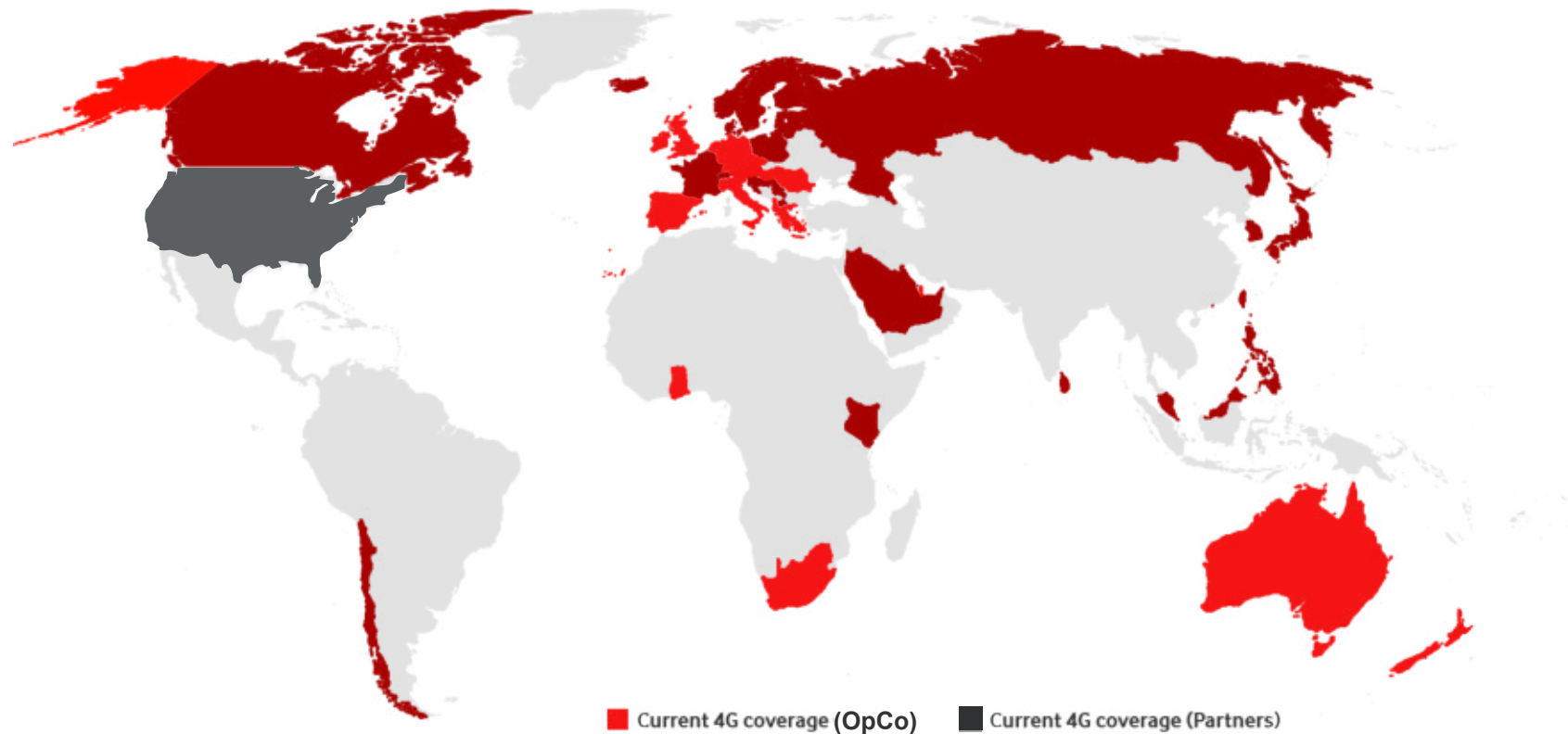
# Infrastructure is critical for digital transformation

We have one of the most extensive global networks, covering more than 150 countries



# We continue to expand & enhance our mobile networks

445 million customers worldwide with 20 million already 4G enabled

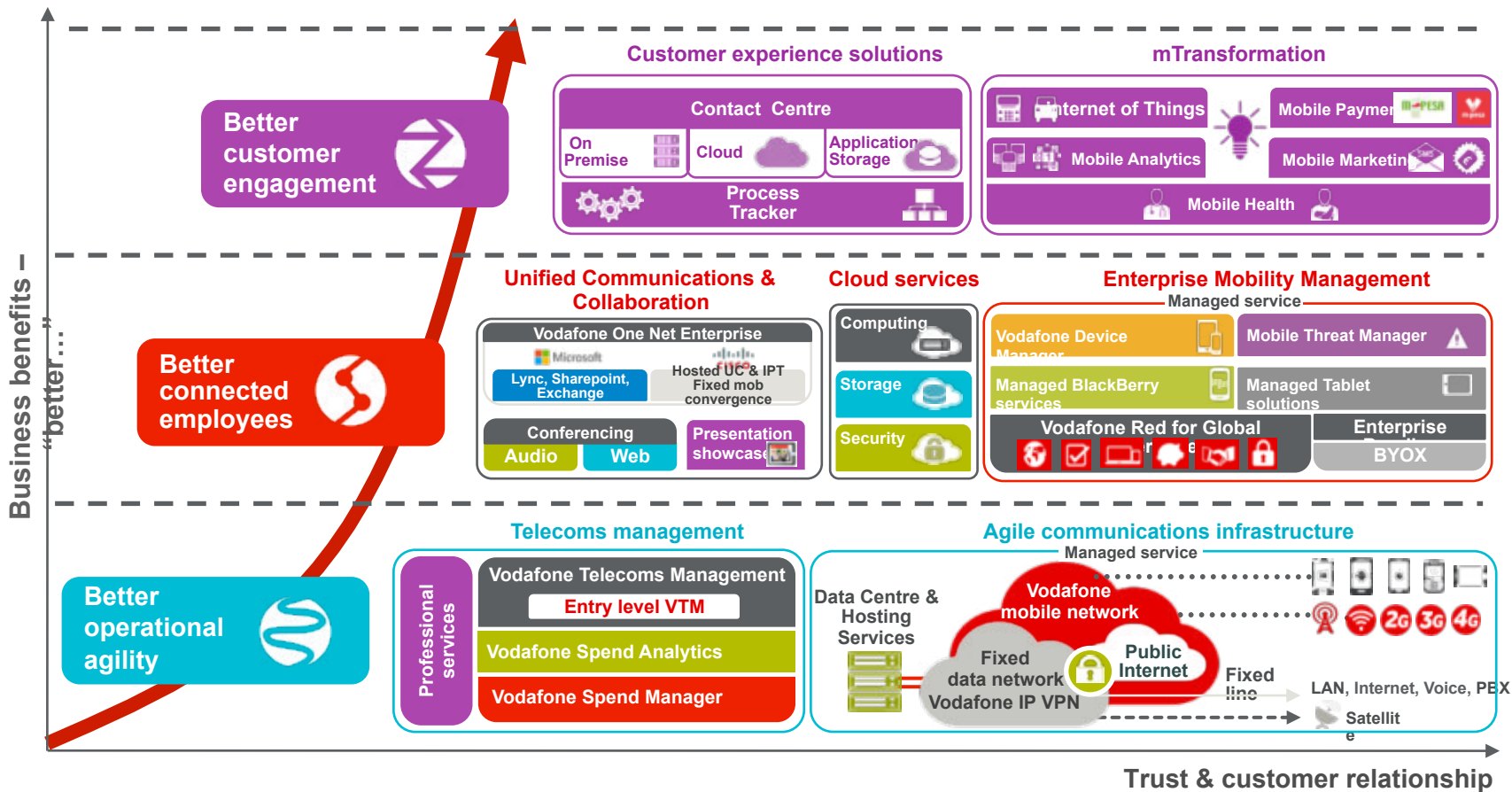




# Global data centre presence extended through partners



# Vodafone Global Enterprise – Our Solutions Portfolio



# Vodafone Global IoT



# Vodafone Global IoT

**800,000**

Vodafone Automotive telematics subscribers

**84M**

Mb of data carried each month

**50M**

IoT Global Connections

**29%**

revenue growth year-on-year

**1,400**

IoT professionals

\* As of Feb 2017

Rated as the best by independent analyst reports



Machina Research

Gartner

Shared in Confidence





# GLOBAL IoT NETWORK & 4G

Furthest reaching global presence with local depth



 4G coverage  
on multiple networks

 4G coverage  
on a single network

 2G/3G coverage  
Operative in 182 countries

- ✓ Largest fully owned network in more than 30 countries
- ✓ Over 700 Roaming Agreements
- ✓ Coverage in 182 countries
- ✓ 4G in 60 countries
- ✓ Compelling competitive commercial contracts
- ✓ The ability to control quality of network service for you and our customers
- ✓ Commitment to bespoke service level agreements (SLAs)
- ✓ Data protection compliance in line with local privacy laws
- ✓ Ability to plan investments accurately and predict costs



# The Vodafone IoT Portfolio offers different solutions for 5 elementary company departments

## Vodafone IoT Solutions

### 1 Machines

- Monitoring of Machines and Assets (forklifts, tracking of modules, etc.)
- Localization von of goods and machines
- Enabling scanner for data transfer

### 2 Fleet

- GPS-positioning of Company fleet cars
- Vehicles with digital odometer



### 3 Facilities

- Energy-Data-Management
- Building / heating control



### 4 Employees

- Employee protection
- Replacement of classic radio network



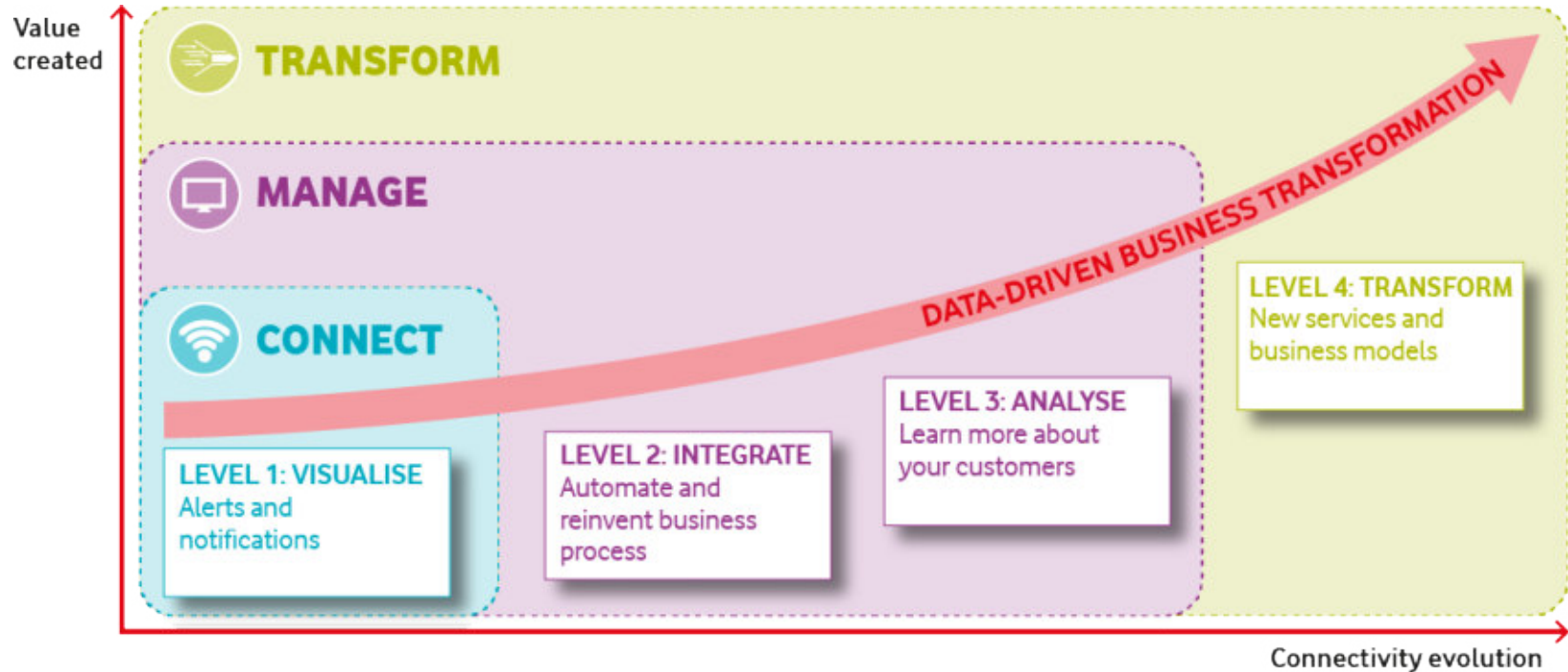
### 5 Infrastructure

- Street lightening
- Waste-Management



# We help our customers transform their business

A methodology for data-driven business transformation



# Vodafone's M2M end-to-end solution

**Customer Asset**



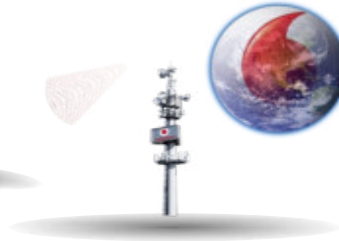
**M2M Hardware Portfolio**



**Vodafone SIM**



**Global M2M Network**



**M2M Platform**



**Application**



**Vodafone delivers the complete M2M solution (end-to-end)**

 One Network

 Global SIM

 SLAs

 Partner

 M2M Platform

 Strong Brand



# Contact us:



**Shinichi Tani**

**Global Project Manager, IoT APAC**

**Group Technology Enterprise Solutions**

**Vodafone Global Enterprise Limited**

**Mobile: +81 80 4006 6167**

**Email: [shinichi.tani@vodafone.com](mailto:shinichi.tani@vodafone.com)**