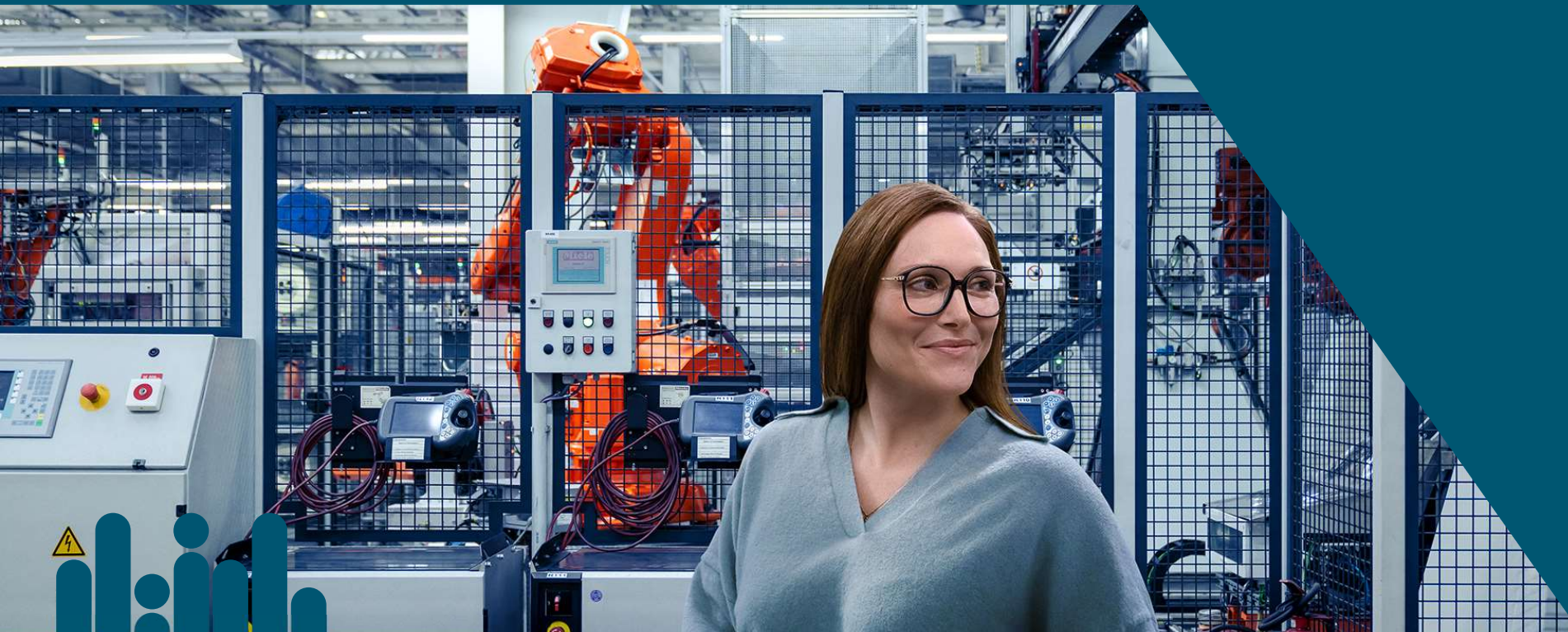


North Rhine-Westphalia (NRW) Germany's Industrial Powerhouse





North Rhine-Westphalia (NRW) Germany's Industrial Powerhouse

NRW in Europe and in Germany



160 Mio

Consumers
within a radius of
500km

GDP 733 bn €

20% of
Germany's
GDP

17.9 Mio

Inhabitants

710.000

Small and
Medium-sized
companies

17

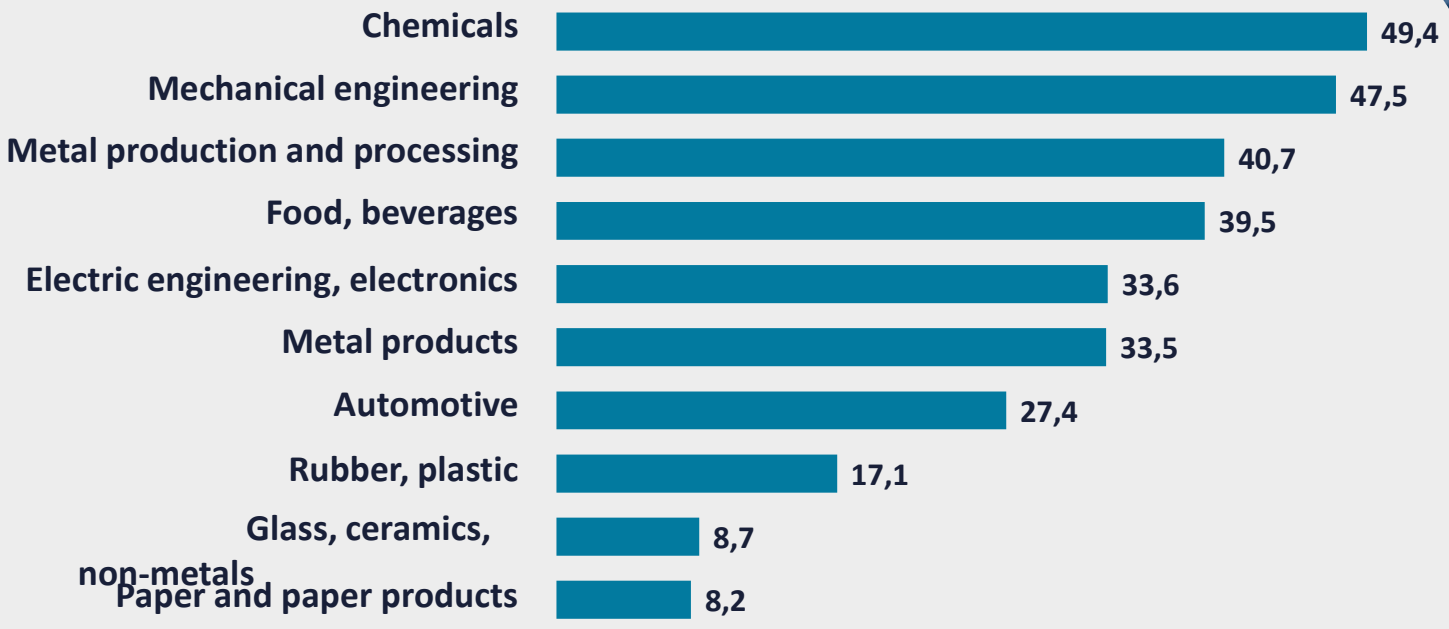
of the 50 top-
selling
companies in
Germany

€357 bn

In sales
generated by
industrial
enterprises

Top location of the industry

(Sales in 2021 in bn €)



Logistic Hotspot No. 1 – Europes densest transport infrastructure

Duisburg

world's
biggest inland port

120 ports,
112.1 million
tons of goods by
ship

25%

of all logistics centers
in Germany

2,200 km
of expressways

Max 3h

Flight to all major
cities in Europe

From
6 airports to half
of the world

Europe's densest R&D Landscape

68

Universities &
Technical Colleges

60

Technology Centers

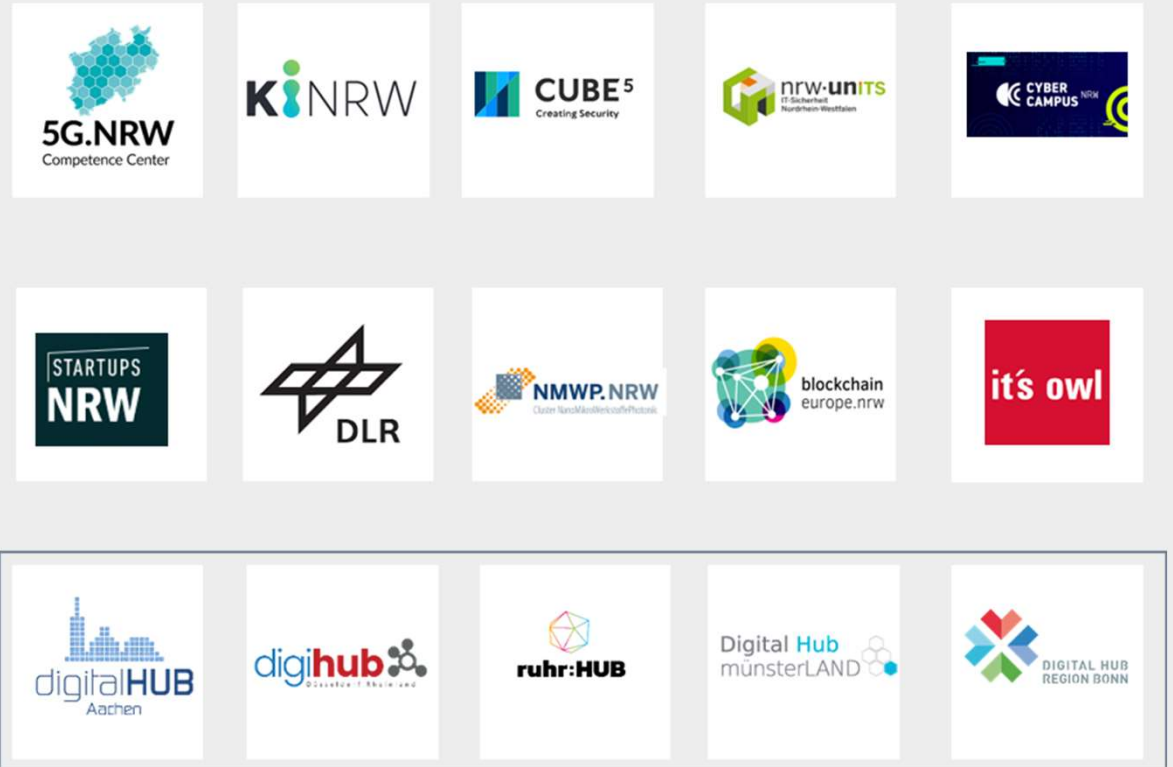
30+

Technology Transfer
Units

AI

Tech clusters and regional innovation platforms

EUROPE'S  HEARTBEAT



One of Europe's best breeding grounds for talent

780,000

Students at NRW
Universities

27%

of all students in
Germany

More than every
third student is
enrolled in a
STEM subject

NRW is the most international and Asia oriented region in Germany



1.200

Huawei, Minmetals, Shangong, XCMG, ZTE



650

Canon, Denso, Fujifilm, Hitachi, Mitsubishi Electric, NEC, Shimadzu, Shiseido, Takasago, Toshiba, Toyota



120

Alivira, Bharat Forge, BSV Bioscience, Infosys, RCL, Sudarshan Chemicals, TCS, Venus Pharma, Wipro



60

Doosan, Machine Tools Europe, Hwacheon, Unitech



60

Emery Oleo, KLK, Cocotama Germany GmbH, Top Glove, Prisma Solar

- Most investment projects are from Greater **China**.
- Most jobs created by **Japanese** investments.
- IT, automotive, chemicals and pharma are the main industries represented by **Indian** investment.
- Major investor countries from **ASEAN** are: Malaysia, Singapore and Thailand.

NRW: Business-Hub No.1 for Japanese Companies in Europe

FUJIFILM **DENSO** **TEIJIN**



NIPPON EXPRESS
Global Logistics Provider

Yakult

NYK LOGISTICS
& MEGACARRIER

HOYA



TOYOTA

TOSHIBA
Leading Innovation >>>

Canon



**MITSUBISHI
ELECTRIC**

YKK
Little Parts. Big Difference.™

SONY

NEC

AsahiKASEI **SHISEIDO**

- Economic relations with Japan are of great importance for NRW.
- Japanese companies are world leaders in many areas of high technology, such as robotics, quantum computing, 5G and advanced materials.
- Japan holds the second rank in R&D intensity in the world.
- Japanese companies make an important contribution to the economy of North Rhine-Westphalia:
 - About 650 Japanese companies are located in NRW
 - Annual sales of about 38 bn Euros
 - More than 50% of these are European HQs
 - About 53.000 employees in NRW
- **Key sectors:**
 - Automotive Supply,
 - Machine Engineering,
 - Electronics,
 - Chemicals and Pharmaceuticals
- **Reasons for choosing NRW:**
 - best infrastructure (logistics, corporate services, quality of life)
 - favorable logistical position
 - large consumer market
 - large B2B market

Germany's power house of energy and industry



- **NRW is one of the most important regions for power production and energy consumption in Europe.**
 - 20% of Germany's power generation
 - 25% of Germany's consumption
 - Industry is the biggest consumer
 - 5.000 companies are active in the field of Renewable Energy
- **The energy supply especially for the industry heavily depends on coal (lignite and hard coal).**
 - in NRW over 90 %
 - In Germany over 70%

One of Europe's best breeding grounds for talent

780,000

Students at NRW Universities

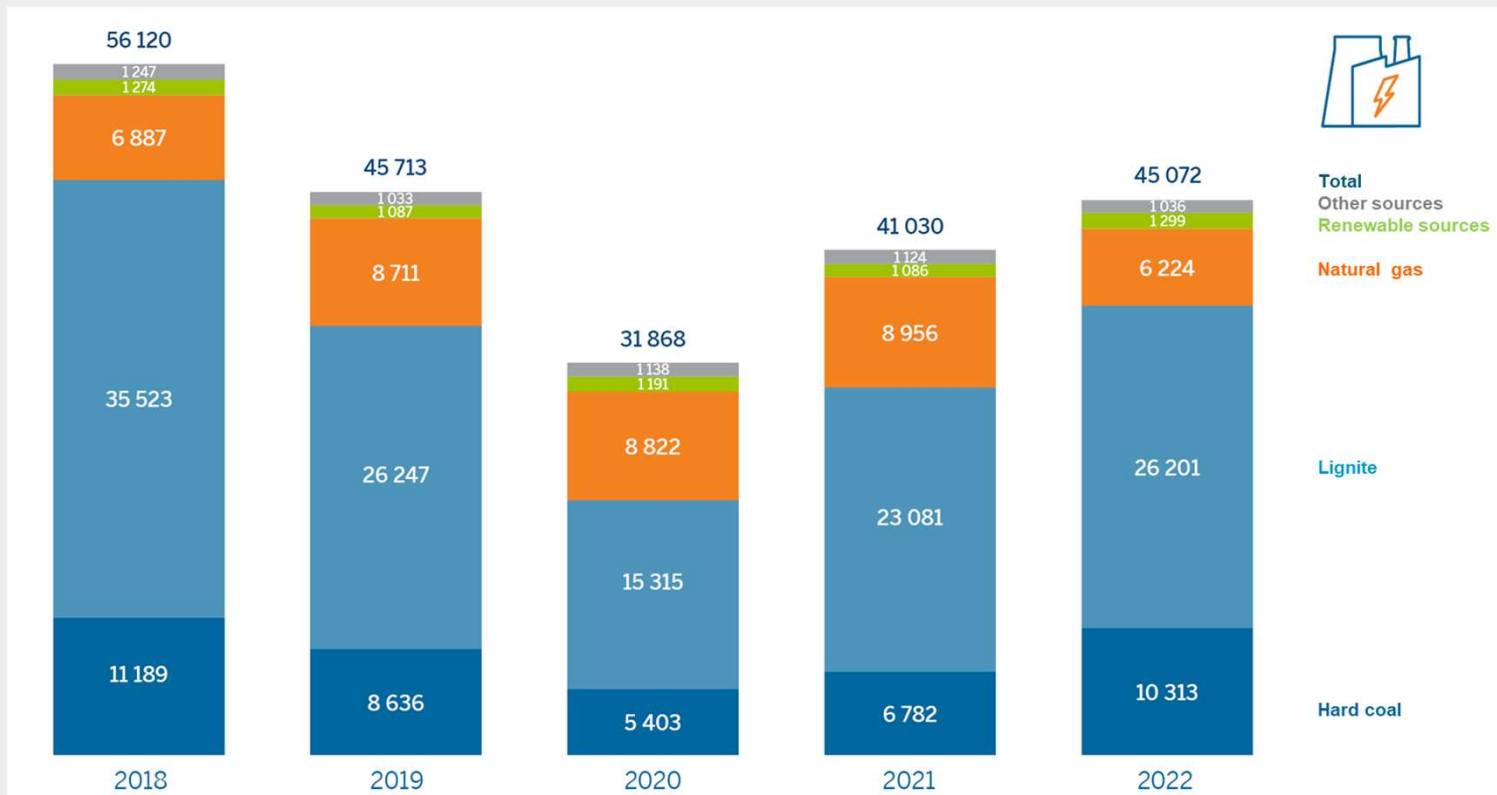
27%

of all students in Germany


More than every third student is enrolled in a STEM subject

Power Generation in NRW Depends Heavily on Coal

- Power Generation in NRW per first half of each Year in GWh by source from 2018 to 2022



Grafik: IT.NRW



NRW as Driver of the Energy Transformation: Coal Phase-out by 2030

Improve of
energy
efficiency

Expansion of
renewables

Foster R&D and
innovation in
energy-
technologies

Focus on H2 as
key energy
source for
industry and
mobility

**North Rhine-Westphalia (NRW),
Germany's Industrial Powerhouse
is looking forward to welcome you!**

EUROPE'S  HEARTBEAT

Thank you very much for your attention!